

## Auxiliary Rams and Related Accessories



These powerful rams feature quick coupler connections for fast setup and portability and require only minimum mounting space.

### 10-Ton Low Pressure Rams

**Part No. 601196 – 4" (100mm)**

For use with Titan 360 and S21M systems

**Part No. 601197 – 6" (150mm)**

For use with Titan 360 and S21M systems

**Part No. 450479 – 4" (100mm)**

For use with *impulse-E/VHT* and Goliath systems

**Part No. 450441 – 6" (150mm)**

For use with *impulse-E/VHT* and Goliath systems

### 10-Ton High Pressure Rams

**Part No. 601877 – 4" (100mm)**

Collapsed length 5 1/16" (130mm)

**Part No. 602360 – 6" (150mm)**

Collapsed length 11 1/2" (290mm)

### Auxiliary Ram Add-On Kit

**Part No. 691026 (Low Pressure)**

**Part No. 691024 (High Pressure)**



Auxiliary Ram  
Add-on Kit

Components needed to add an additional portable ram to the Chief EZ Liner. Allows an extra "multi-pull" to handle the really big jobs. Kit includes: 6" (150mm) ram, coupler, all hoses, and mounting fittings.

#### NOTE:

1. 3/8" (10mm) nipple and high pressure tee is included. (Not required for EZ Liner II/Classic models.)
2. 3/8" (10mm) nipple is not required for Standard EZ Liner "Grommet" model.

### Ram Base

**Part No. 611303**

This Ram Base holds Chief's rams (602360 & 601877) perpendicular to mainframe when lifting vehicle or making downpull. It reduces the possibility of ram tipping over or kicking out.

*Low Pressure Ram Base Part No. 601140 (Not Shown)*



Ram Base

#### Standard and S21 "Welded Coupling" Model

Part #	Description
604576	3/8" (10mm) Nipple
605907	High Pressure Tee
602474	176" (4.4m) Hose
602802	3/8" Valve
616122	27" (70mm) Hose
602407	Male Quick Coupler
602360	6" (150mm) Ram
602319	Male Connector
602335	V-Base (2)

#### Standard EZ Liner Only "Grommet" Model

Part #	Description
605907	High Pressure Tee
602474	176" (4.4m) Hose
602802	3/8" Valve
616122	27" (70mm) Hose
602407	Male Quick Coupler
602360	6" (150mm) Ram
602319	Male Connector
602335	V-Base (2)

#### EZ Liner II/Classic Model Only

Part #	Description
602474	176" (4.4m) Hose
602802	3/8" Valve
616122	27" (70mm) Hose
602407	Male Quick Coupler
602360	6" (150mm) Ram
602319	Male Connector
602335	V-Base (2)

### Optional\*

**Part No. 682806 –**

**190" (4.8m) Hose**

**Part No. 602407 –**

**Male Quick Coupler**

\* For EZII/Classic owners who do not want to use the system's hydraulic line for auxiliary tower(s).

## Auxiliary Rams and Related Accessories

Get tough on the hard hits!



### Auxiliary Extension Tubes

Part No. 601842 – 6" (150mm)

Part No. 601850 – 12" (300mm)

Part No. 601869 – 20" (510mm)

Part No. 601922 – 31" (790mm)

Four lengths that turn your portable ram into a super tool with unlimited pulling capabilities.



### Flat Cap

Part No. 620840

This attachment protects the ram's threads and serves as a pushing base.



### Male Pull Ram Hook

Part No. 601213

Works with the female pull ram hook in conjunction with the 6-inch dual-acting ram to create a pull arm used on the S21M and Excelsator.



### Female Pull Ram Hook

Part No. 601214

Works with the male pull ram hook in conjunction with the 6-inch dual-acting ram to create a pull arm used on the S21M and Excelsator.



### Auxiliary Ram Male Coupling

Part No. 607849

This heavy duty component enables extension tubing to be attached to the ram's base.



### Auxiliary Ram Female Coupling

Part No. 601826

This heavy duty component enables extension tubing to be added to ram end.



### Auxiliary Ram Extension

Part No. 601834

A convenient add-on that connects auxiliary extension tubes for extra length.



### Threaded Male Connector

Part No. 602319

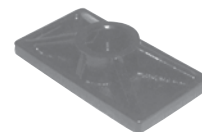
Convenient threaded connector for quick accessory add-ons.



### Auxiliary Pulling Head

Part No. 610829

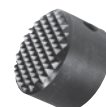
Engineered for hard pulls, this attachment secures the chain to the auxiliary ram and extension tubing.



### 10-Ton Flat Base

Part No. 609887

The 10-Ton Flat Base is another heavy duty component that can be used as a flat pushing or lifting surface.



### Serrated Saddle

Part No. 605640

Part No. 092105 (smooth not shown)

The attachment protects the ram's and other male coupling threads, while perfect for use as a pushing base.



### "V" Base

Part No. 602335

Designed for protection of the ram's threads. The V-Base is ideal for a pushing base.

## Accessory Packages

Chief Accessory Packages feature the most innovative tools for repairing today's vehicles.

These pulling accessories are available in eleven configurations, offering maximum versatility to keep pace with the evolution of automotive design. You can make precise pulls on hundreds of unitized and conventional frame models while minimizing the possibility of distortion.



### Basic Clamping Accessory Package

Part No. 619184

Part No.	Qty.	Description
CL1590CA	1	Chief Angle Bite-Tite Clamp
CL0690CA	1	Chief Mini Bite-Tite Clamp
611899	1	All-Angle Clamp
619080	1	Mo-Clamp Mini Spring Clamp
619082	1	Mo-Clamp Dyna-Mo C
619083	1	Mo-Clamp Dyna-Mo W
619084	1	Mo-Clamp Door Post Puller/Twister
619111	1	Mo-Clamp Boltless Strut Tower Puller



### Basic Chaining Accessory Package

Part No. 619182

Part No.	Qty.	Description
602853	2	Chain, Tie-Down, 3/8" x 4' w/ Hook
602861	2	Chain, Tie-Down, 3/8" x 8' w/ Hook
606548	4	Slotted Chain Anchor



### Deluxe Clamping Accessory Package

Part No. 619189

Part No.	Qty.	Description
CL0690CA	1	Chief Mini Bite-Tite Clamp
092495	1	Regular Sill Hook Package
602749	2	'T' Hook, w/ 18" Chain
602896	1	Nylon Fender Strap



### Deluxe Chaining Accessory Package

Part No. 619181

Part No.	Qty.	Description
602749	2	'T' Hook, w/ 18" Chain
602757	2	'R' Hook, w/ 18" Chain
602853	2	Chain, Tie-Down, 3/8" x 4' w/ Hook
602861	2	Chain, Tie-Down, 3/8" x 8' w/ Hook
605261	2	Bumper Puller w/18" Chain
619057	2	Slotted Chain Hook
610984	2	Chain Connector
610870	1	Pulling Plate, Right
610888	1	Pulling Plate, Left
606548	4	Slotted Chain Anchor
628220	2	Turnbuckle Assist



### Basic Chain and Clamp Accessory Package

Part No. 619146

Part No.	Qty.	Description
602749	2	'T' Hook, w/ 18" Chain
602757	2	'R' Hook, w/ 18" Chain
602853	2	Chain, Tie-Down, 3/8" x 4'
602861	2	Chain, Tie-Down, 3/8" x 8'
605253	2	Hole Hugger, w/ 18" Chain
605261	2	Bumper Puller, w/ 18" Chain
606548	4	Slotted Chain Anchor
610870	1	Pulling Plate, Right
610888	1	Pulling Plate, Left
610984	2	Chain Connector
611880	1	Unitized Body Clamp
611899	2	All-Angle Clamp
619057	2	Slotted Chain Hook
624235	2	Side Pull Attachment (Chief)
672000	1	1 1/2" Self-Tightening Clamp
672034	1	2" Self-Tightening Clamp

## Accessory Packages



### Deluxe Chain and Clamp Accessory Package

Part No. 697150

(shown with optional tie-down bolts)

Part No.	Qty.	Description
CL0690CA	1	Chief Mini Bite-Tite Clamp
CL1190CA	1	Chief Bite-Tite Straight Pull Clamp
CL1290CA	1	Chief Bite-Tite C Clamp
CL1590CA	1	Chief Angle Bite-Tite Clamp
092495	1	Regular Sill Hook Package (Chief)
602749	2	'T' Hook, w/ 18" Chain
602757	2	'R' Hook, w/ 18" Chain
602853	2	Tie-Down Chain, 3/8" x 4' w/ Hook
602861	2	Tie-Down Chain, 3/8" x 8' w/ Hook
602896	1	Nylon Fender Strap
602909	1	Cable Sling
605253	2	Hole Hugger, w/ 18" Chain
605261	2	Bumper Puller, w/ 18" Chain

Part No.	Qty.	Description
606548	4	Slotted Chain Anchor
610870	1	Pulling Plate, Right
610888	1	Pulling Plate, Left
610917	1	Down Pull Attachment
610984	2	Chain Connector
611880	1	Unitized Body Clamp
611899	2	All-Angle Clamp
619057	2	Slotted Chain Hook
624235	2	Chief Side Pull Attachment
628220	2	Turnbuckle Assist
648798	2	Small Tower Pin Block, EZ25 & S21M
648799	2	Large Tower Pin Block, EZ25 & S21M
672000	1	1 1/2" Self-Tightening Clamp
672034	1	2" Self-Tightening Clamp



### Accessory Package - Streamliner Tower

Part No. 401600

Part No.	Qty.	Description
CL0690CA	1	Chief Mini Bite-Tite Clamp
602853	2	Tie-Down Chain, 3/8" x 4' w/ Hook
606548	2	Slotted Chain Anchor
611899	1	All-Angle Clamp
672000	1	1 1/2" Self-Tightening Clamp
672034	1	2" Self-Tightening Clamp



### Straight-Well Accessory Package

Part No. 519723

Part No.	Qty.	Description
519730	1	Anchoring Tool Box
SW001	1	Original Straightwell
SW002	1	Original Flat Straightwell
SW003	1	Heavy Straightwell
SW004	1	Heavy-Flat Straightwell
SW005	1	Junior Straightwell
SW006	1	Junior-Flat Straightwell



### Auxiliary Pulling Package - Impulse Tilt

Part No. 619145

Part No.	Qty.	Description
601834	3	Auxiliary Extension Coupling
601842	2	Auxiliary Extension, 6"
601850	2	Auxiliary Extension, 12"
601869	1	Auxiliary Extension, 20"
601922	1	Auxiliary Extension, 31"
602335	1	Ram V-Base
602360	1	Auxiliary Ram, 6" Stroke
606548	2	Slotted Chain Anchor
607849	2	Auxiliary Male Coupling
610829	1	Auxiliary Pulling Head
619057	1	Slotted Chain Hook



### Auxiliary Pulling Package - Impulse E/VHT & Goliath

Part No. 619158

Part No.	Qty.	Description
450441	1	Auxiliary Ram, 6" Stroke
601140	1	Auxiliary Ram Base
601834	3	Auxiliary Extension Coupling
601842	2	Auxiliary Extension, 6"
601850	2	Auxiliary Extension, 12"
601869	1	Auxiliary Extension, 20"
601922	1	Auxiliary Extension, 31"
602335	1	Ram V-Base
606548	2	Slotted Chain Anchor
607849	2	Auxiliary Male Coupling
610829	1	Auxiliary Pulling Head
619057	1	Slotted Chain Hook



### Auxiliary Pulling Package - S21M & Titan

Part No. 619156

Part No.	Qty.	Description
601140	1	Auxiliary Ram Base, Low Pressure, S21M
601197	1	Auxiliary Ram, 6" Stroke w/ Quick Coupler
601213	1	Male/Klaw Assembly
601214	1	Female/Klaw Assembly
601834	3	Auxiliary Extension Coupling
601842	2	Auxiliary Extension, 6"
601850	2	Auxiliary Extension, 12"
601869	1	Auxiliary Extension, 20"
601922	1	Auxiliary Extension, 31"
602335	1	Ram V-Base
606548	2	Slotted Chain Anchor
607849	2	Auxiliary Male Coupling
610829	1	Auxiliary Pulling Head
619057	1	Slotted Chain Hook



## Pulling Accessories



### Auxiliary Push Attachment

**Part No. 612058**

(S21M, Titan, Standard & 10-Ton G-Series)

**Part No. 648900**

(EZ25, EZII, EZ Liner Classic, 5-Ton G-Series, Posi-Trak)

The Auxiliary Push Attachment provides a secure and convenient method of pushing from a tower with an auxiliary ram.



Part No. 650205



Part No. 650200

### Portable Gauges

**Part No. 650205**

with quick coupler

**Part No. 650200**

plumbed direct to tower valve

The 650200 portable pressure gauge offers you a way to update your EZ Liner to the most current design – offering an improved line of sight for monitoring hydraulic pressure. The 650205 portable gauge allows you to connect an auxiliary line to the gauge. The gauge's "L" bracket is adjustable to hook into the first deck hole of all EZ Liners.



### Tower Pinning Plates

**Part No. 648800**

(Includes 2 small and 2 large for EZ25, S21, S21M and Titan)

**Part No. 648750**

(Includes 2 small and 2 large for EZII and Classic)

The tower pinning plate acts as a cam that lets you put a tower at a specific angle and maintains that angle after pressure is applied.



### External Tower Bolt Down Plate

**Part No. 648725**

(EZ25 Series, EZII, Classic)

**Part No. 648730**

(S21M and Standard)

The external tower bolt down plate offers a fast and easy method of bolting down your tower at infinite bolting positions, versus bolting through deck holes which only offers incremental bolting positions with "dead spots" in between deck holes.



### Wheel Chock Assembly

**Part No. 648880**

(One)

**Part No. 648882**

(Set of Two)

The Wheel Chock Assembly is a fast and secure method of blocking a vehicle's wheels before lifting the frame machine. Works on all Chief frame machines.

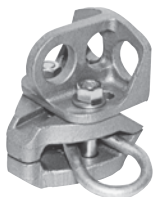


### Sure-Lock® Handle Extension

**Part No. 450510**

Lock and unlock your Sure-Lock® towers with ease using Chief's Sure-Lock Handle Extension. Acting similar to a "cheater bar," the Handle Extension fits easily over your Sure-Lock tower handles, allowing you to lock or unlock the tower clamping mechanism with little or no effort.

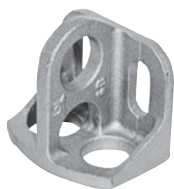
## Pulling Accessories



### All Angle Clamp

Part No. 611899

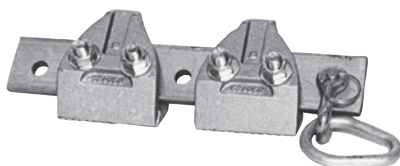
One of the most versatile clamps you can use. Installs in seconds for pulls at any angle. Breaks down for various setup combinations.



### Side Pull Attachment

Part No. 624235

Designed to work with the unitized body clamp for side pulls.



### Unitized Body Clamp

Part No. 611880

A super clamp designed to secure unitized body vehicles and much more. This accessory will be among the most used in your shop. Components are used singularly in some clamping situations.



### Chief 2" Self-Tightening Clamp

Part No. 672034

This model has a 2" (50mm) throat so it will go over a flange and pull. No more welding a plate on the damaged area for a pull.



### Chief 1 1/2" Self-Tightening Clamp

Part No. 672000

Here's the clamp you'll use every day! It's designed to get in the very tight places where no other clamp will go and yet, you'll never use a wrench to tighten it. Made of high quality steel. 1 1/2" (38mm) throat.



### Chief Mini Bite-Tite Clamp

Part No. CL0690CA

Self-tightening with a thin-edged nose for getting into hard-to-reach places. Drop-forged round wedge keeps twists out of the chain. Aggressive cross-hatch tooth design and spring-loaded for easy opening.



### Chief Bite-Tite C-Clamp

Part No. CL1290CA

Self-tightening, small, light, and versatile. Designed to provide a big pull in a small area. Has a minimum of 1 1/2" (38mm) throat clearance to reach around flanges, cowls, pinch-welds, and lips. Butts against panels where only narrow bite is available. 1-1/2" (38mm) jaws give added grip. Original wedge. Original straight cut tooth design.



### Chief Angle Bite-Tite Clamp

Part No. CL1590CA

Self-cleaning, self-tightening clamp with a gator tooth design and a 45 degrees head for those hard-to-pull areas. Drop-forged wedge for extra durability and long life.



## Tie Down Chains

**Part No. 602853** – 4' (1.2m) Length

**Part No. 602861** – 8' (2.4m) Length

A quality 3/8" (10mm) chain designed to withstand the "heavy" loads. Rigid alloy end hook.



## R-Type Hook With Chain

**Part No. 602757**

A must for repairing unitized body vehicles. The "R" Hook fits into transport tie down holes for instant tie downs or pulls.



## Oval Loop

**Part No. 605480**

Oval-shaped Loop is used to link pulling chain to pulling attachments.



## Bumper Puller With Chain

**Part No. 605261**

A versatile chain and hook assembly. Allows quick setup for pulls on frame and unibody cars. Wide hook width helps protect metal.



## Hole Hugger With Chain

**Part No. 605253**

Provides the fastest setup you can use. A reliable tie down accessory for most standard frame holds.



## Chain Shortener

**Part No. 605288**

This versatile accessory connects and shortens chains for safer, more accurate pulls.



## T-Type Hook With Chain

**Part No. 602749**

The "T" Hook is used for instant tie downs on unitized and some conventional frame vehicles and is heavy duty for long life.



## Double Grab Hook Assembly

**Part No. 619090**

Allows technicians to quickly connect or shorten chains.



## Pin And Shackle

**Part No. 605472**

Generally used with Oval Loop and/or Triangle to link pulling chain to pulling attachments.



## Chain Connector

**Part No. 610984**

A handy tool that allows fast setup to tower chains.



## Triangle

**Part No. 605464**

Triangle-shaped Loop is used to link pulling chain to pulling attachments.

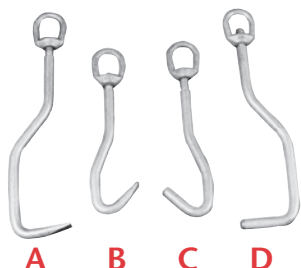


## Slotted Chain Hook

**Part No. 619057**

A great time saver on setups. No chain is too long and no hooks are needed on the chain.

## Pulling Accessories



### Sheet Metal Pulling Hooks (Mo-Clamp)

Part No. 605309 (Set of four)

Lightweight for fast action and safe pulls on most sheet metal panels. Each hook has a threaded 1/2" (1 mm) nut for setups at any angle. (Sheet Metal Pulling Hooks, although 100% tested, are not warranted by Chief.)

Ref.	Part #	Description
A	605413	Sheet Metal Hook, Flat, 15" (380mm)
B	605430	Sheet Metal Hook, Flat, 11" (280mm)
C	605421	Sheet Metal Hook, Round, 11" (280mm)
D	605405	Sheet Metal Hook, Round, 15" (380mm)

**CAUTION:** Sheet metal hooks are designed to be used up to 2,500 psi (2.5 tons) as read on the machine's pressure gauge.



### Sheet Metal Plates

Part No. 610870 – Right

Part No. 610888 – Left

Plates of this attachment are generally bolted to damaged sheet metal that requires pulling.



### Nylon Body Strap

Part No. 602888

A tough, durable strap that provides a multitude of body pulls in heavy pulling situations where a chain might damage the structure.



### Nylon Fender Strap

Part No. 602896

Extra long strap for aligning fenders, sheet metal and various body pulls. Tough nylon for long life.



### Cable Sling

Part No. 602909

Reaching those awkward places with a chain is impractical. This sling features extra long looped ends with heavy clamp connections.



### Frame Pulling Plate

Part No. 603240

A variety of holes and slots to align with any conventional frame and many unitized bodies. Heavy duty steel for extra strength.



### C-Type Pull Hooks

Part No. 603514 (Large)

Part No. 603522 (Medium)

Part No. 603530 (Small)

Chief's C-Hooks are perfect accessories for reaching around frame structures. Three sizes designed for accurate pulls for most every angle and repair situation.

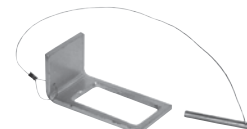


### Tie Down Post

Part No. 610263

Provides solid anchoring from almost any position around the Chief S21, S21M and Titan. It's also ideal for use as a "push" base.

**NOTE:** • Requires Tie Down Post Lock Collar, Part No. 610431.  
• For use with the S21, S21M and Titan.



### Tie Down Post Lock Collar

Part No. 610431

Used in conjunction with the Tie Down Post (above).

**NOTE:** • For use with the S21, S21M and Titan only.





## Slotted Chain Anchor

Part No. 606548

A great time saver, this fast, positive chain anchor can secure a chain quickly to the mainframe.



## Chief Regular Sill Hook Set

Part No. 092495

The perfect accessory for reaching around obstacles like frame rails, hinge pillars, etc. The interchangeable feet allow the hook to be used virtually anywhere.



## Down Pull Attachment

Part No. 610917

Designed to attach anywhere on the mainframe to make a down pull with a tower. This accessory can be set at any angle.



## Chief Down Pull Attachment

Part No. 697730 (EZ Liner)

The down pull attachment allows operators to make forward, rearward, side and angular down pulls when used on the machine's treadway. It allows just side down pulls when used on a cross-member. The attachment can be used on all Chief repair systems.



## Universal Down Pull Attachment

Part No. 529238

The Universal Down Pull Attachment can be used with practically any pulling system. The flexibility of the device allows technicians to make down pulls at a variety of locations around the vehicle.



## Slotted "L" Hook

Part No. 672018

One of the handiest tools in the shop. A great tool for a quick pull almost anywhere.



## Jumbo Pulling Plate With Legs (Mo-Clamp)

Part No. 602669 With 3 Legs

Includes a multi-adaptable jumbo strut pulling plate and two sets of extension legs to fit most U.S. and global suspensions.



## Boltless Strut Tower Puller (Mo-Clamp)

Part No. 619111

Designed for many European vehicles and the Ford Contour. Easy, fast, reliable method for pulling strut towers. Developed for strut towers without bolts to correct chassis dimensions to factory specifications. Strut tower removal is necessary.

## Accessories

### Users' Manuals

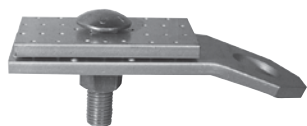
Part No. 629175 – UGMS  
Part No. 618740 – UAS  
Part No. 788070 – Velocity  
Part No. 788183 – Vector  
Part No. 150022 – UMS  
Part No. 687018 – Titan-360  
Part No. 450497 – *impulse-E/VHT*  
Part No. 450042 – *impulse-VHT*  
Part No. 450040 – *impulse-Tilt*  
Part No. 683658 – S21M  
Part No. 539449 – F.A.S.T.



### Panel Puller (Mo-Clamp)

Part No. 619070

Perfect for pulling damaged quarter panels and wheel housings.



### Sandwich Clamp (Mo-Clamp)

Part No. 092161

Designed for use as a standard unibody tie down clamp with versatility for pinchweld and panel pulling. Staggered case-hardened pins allow full non-slip gripping in any plate location as plates don't need to be squarely lined up with one another.



### Twin Pull (Mo-Clamp)

Part No. 092162

Do you have a need for a light pull but a larger gripping area? The Twin Pull enables you to use two clamps side by side for more pull. Designed for use with 3/8" (10 mm) chain.



### Versa Hook (Mo-Clamp)

Part No. 092157

The Versa Hook is a versatile tool used as an outer track tie down to secure vehicles during pulls. It is used as a pulling device for rocker panels, door posts, windshield posts, etc. Versa Hook end is 2 1/2" (63 mm) wide.



### Tac-N-Pull With Plates (Mo-Clamp)

Part No. 092175

Reorder Pull Plates:  
092722 – 1" Plate  
092723 – 1 1/2" Plate  
092724 – 3" Plate

When it's impossible to pull a panel with a hook or clamp, simply tack weld a reusable plate and pull.



### Mini-Bite With Pull Ring (Mo-Clamp)

Part No. 092176

The reversible Mini-Bite Clamp is designed to get around lips and corners for strong pulls and to pull narrow seams and lips. Cross-hatch tooth design assures a firm grip. 1 1/2" (38 mm) wide. Designed for use with 1/4" (6 mm) chain.



### Track Hook (Mo-Clamp)

Part No. 092179

Quick tie down for track systems or back anchoring on frame racks. Lip can be used for pulling damaged areas; varied multiple uses for chain lengthening or shortening. Slot can be used for chain hook-up. Designed for use with 3/8" (10 mm) chain.



### Quick Hook (Mo-Clamp)

Part No. 092182

Four hole-size selections for quick hook-ups in existing frame holes for pulling of damaged frames.