



CAPABLE.


SUSTAINABLE.

ACCOUNTABLE.



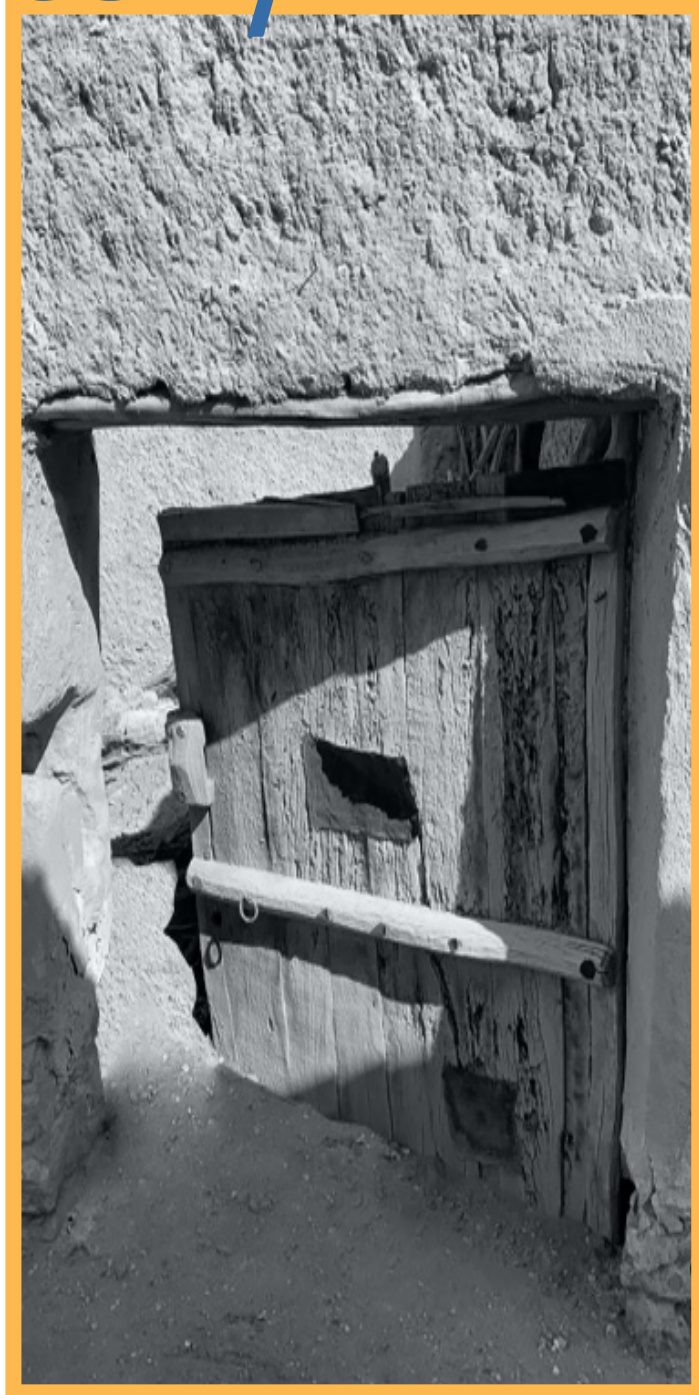






# ABOUT ALITCO

# History



A recent photo of the company's warehouse back in the 1940's in Al-Artawiyah. Where it was used to store various goods such as foodstuffs and fabrics.

# History

1920

ALITCO started in the textile trading field, years after, expanded into the foodstuffs and consumer goods.

1940  
1950

The first signed governmental contract was for the transfer of mail, money and governmental salaries from Majmaah to Hafr Al Batin. A "Study Baker" truck was purchased to be used in transportation, which was the beginning of the fuel trade.

1950  
1960

The transportation sector was developed, more trucks were added. The textile and foodstuff trade has been gradually withdrawn, to be replaced by auto spare parts trade. The establishment has obtained its own commercial register.

1960  
1970

The establishment was converted into a company called "Mohammed Saad Al Drees and Sons Co". The company has expanded significantly in its activities, the car trading activity "Mazda" was added after obtaining the distribution agency and establishing the showroom, maintenance center and outlet for selling spare parts for it. In 1964, tools and equipment were added to the business.

1970  
1980

The company's first industrial activity was added in the field of modifying and assembling hollow metal doors for the "SteelTech" brand in Damam. The Saudi American Glass Factory was also established in partnership with an American company to manufacture architectural glass, and the entire American partners share was purchased in the nineties Gregorian.

1980  
1990

Irrigation & agriculture were added to the company's activities, and a farm in Wadi Al Dawasir was purchased. Scrap metal trade activity was also added in the same year.

1990  
2000

Growth in the entire company's activities.

2000  
2022

Aldrees factory for metal doors was established in Riyadh as an integrated factory to produce hollow metal doors & frames. During the subsequent years, the factory was developed with the best machines, equipment, automation systems and robots. The company has been restructured and a new strategy has been developed to achieve growth in line with economic development. Some activities have been liquidated and the company has been transformed into two companies, one specialized in services, and the other in industry, trade, and agriculture (Aldrees Petroleum & Transportations Services) and (Aldrees Industry and Trading Co. (ALITCO), which was converted into a closed joint stock company.

The acquisition of many international agencies has taken place to support the company's activities. A wooden doors factory was acquired after adding the manufacturing wooden doors activity.





## Vision

To maintain market leadership, by enhancing our current portfolio offerings through disruptive and innovative solutions across emerging sectors within KSA's thriving economy, and through sustainable business practices.

## Values



Teamwork



Quality



Respect



Integrity



Accountability



Customer  
First



# Mission

To become a preferred company of choice:

- We are committed to “Total Customer Satisfaction”, building long term trust relationship with customers.
- We are committed to “Operational Excellence” through process, technology and employee engagement.
- We are committed to delivering “Sustained Earnings” to our shareholders.



# Our Culture



Aldrees Industrial Trading Co (ALITCO) is a company with deep rooted heritage whose “brand goodwill” resonates the family values on how it performs business. ALITCO’s pride has been its commitment to high quality products and services, whilst maintaining its strong relationships and strategic partnerships locally and globally. The company currently operates in manufacturing of best in class, multi grade certified doors frames in steel and wood, door hardware, access controls and customized wood works for the construction sector.

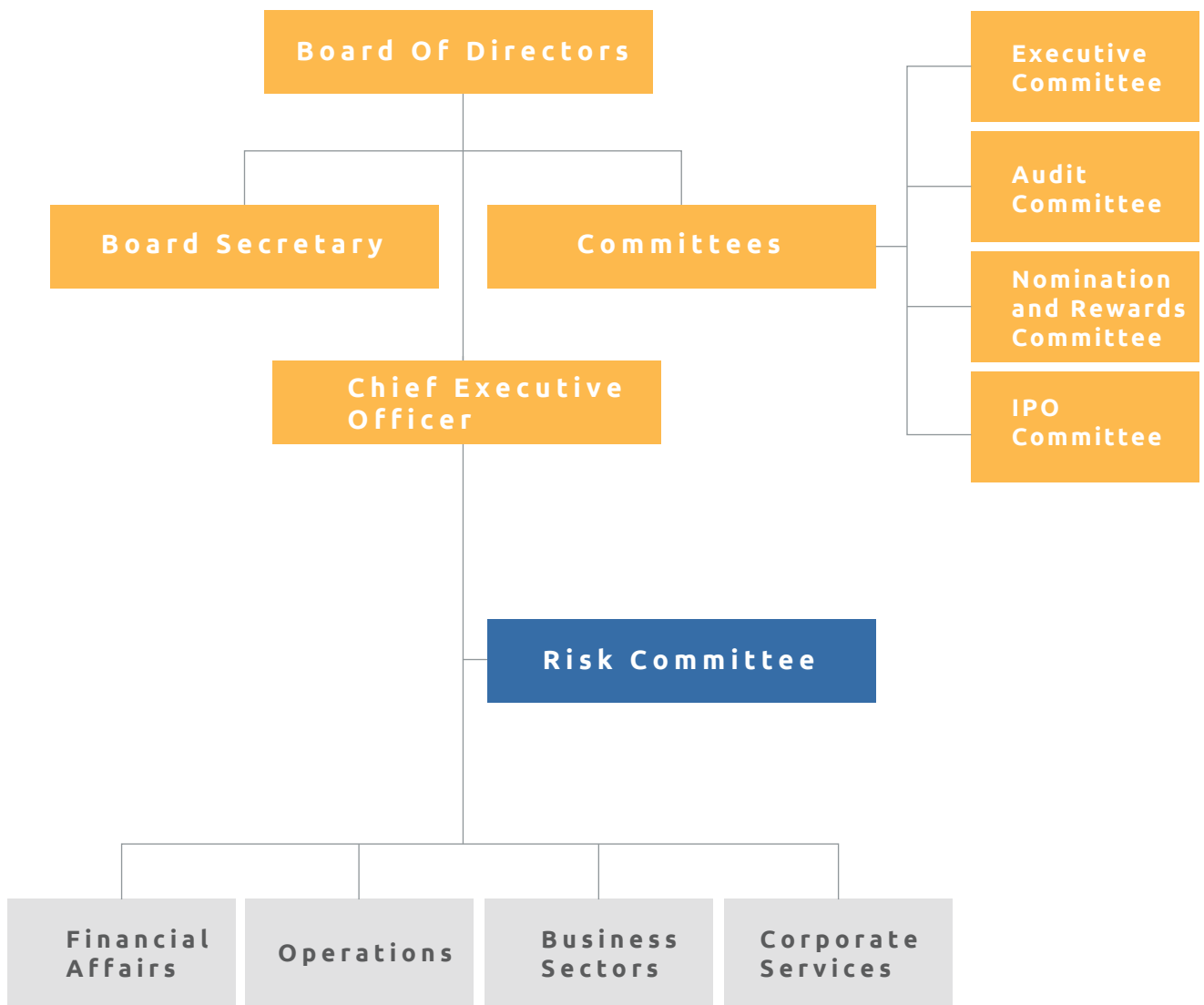
Apart from the building materials, ALITCO is also into trading and distribution of premium electromechanical products and solutions in the energy and automotive services sectors, like fuel solutions, fuel station automation, LPG, EV chargers, Garage equipment, water pump etc.

Being in business for more than a century, ALITCO has attained the market leadership in multiple business segments within the kingdom, delivering bespoke solutions to both B2B and B2G customers.

ALITCO’s building material division achieved business excellence by perfectly crafting the best quality doors frames that are approved in all mega projects within the Kingdom.

# ALITCO

## Corporate Structure



# Board Members

## Transparency Considerations

Aldress industrial and trading company (ALITCO) is a family joint stock company. The Management of the company believes in the independent governance structure and have included independent members on the board of directors to fairly govern the company affairs. The company has established codes of conduct for members of the "Board Of Directors" to ensure compliance with governance rules and regulations across the organization.

### Eng. Abdulmohsen Mohamed Saad Aldrees

#### Chairman

- Has been the Vice Chairman of the Board of Directors of Al Drees Petroleum and Transport Services Company since 2004G until now.
- Member of the Board of Directors of the Prince Fahd Bin Salman Charitable Society.
- Board member of the Disabled Children's Charitable Association.
- Board member of the US Arab National Chamber of Commerce.
- Board member of the Saudi Council of Engineers.

### Mr. Hussain Abdulrahman Saleh Al Azal

#### Vice Chairman

- Advisor to the Chairman of the Board of Directors of the Chamber of Commerce and Industry in Riyadh, Kingdom of Saudi Arabia from 2013 to 2016.
- Secretary of the Chamber of Commerce and Industry in Riyadh, Saudi Arabia from 1996 G until 2013 G.
- Chairman of Al Dimoom Company for Trade and Medical Services Ltd. from 1994 to 1996.
- CEO of FAL Group of Companies from 1991 AD until 1994 AD.
- CEO of the General Arab Medical Services Company Limited ( from 1982 to 1991).
- General Director of Prisoners' Affairs in the Ministry of Interior from 1962 to 1982.

### Dr.Abdulrahman Abdelaziz Abdulrahman Al Rabiaah

#### Board Member

- Faculty member at King Saud University, College of Engineering, since 2001 until now.
- A visiting professor at Lund University in Sweden from 2018 to 2019.
- General Counsel at King Abdelaziz City for Science and Technology from 2008 to 2014.
- Vice Chairman of the Board of Directors of the Renewable Energy Association since 2020 AD until now.
- Board member of the Saudi Chemical Engineering Society from 2008 to 2014.

### Mr.Abdullah Abdulmohsen Aldrees

#### Board Member

- CEO of Al Drees Company for Industry and Trade from 2015 G until now.
- Member of the Board of Directors of the First Entertainment Company since 2008 until now.
- Member of the Board of Directors of the Seven Orbits Real Estate Development Company since 2019 AD until now.
- Member of the Board of Directors of the Group Communications Company since 2010 G until now.
- Member of the Board of Directors of the National Competitiveness Center since 2019 AD until now.

### Mr. Hisham Mohamed Al Shalfan

#### Board Member

- Has been an independent chartered accountant and general manager of a private accounting and auditing office since 2015G until now. .
- A part time advisor to the Accounting and Auditing Organization for the Arab Gulf Cooperation Council from 2009 to 2010.
- Chief Executive Officer in charge of the Accounting and Auditing Organization for the Arab Gulf Cooperation Council from 2007 to 2009.
- Board Member of the Board of Directors of Abdelaziz and Saad Al Mojil Company for Trade and Investment since 2012 G until now.

### Mr. Wael Saad Abdelaziz Al-Rashed

#### Board Member

- Executive advisor at the Expenditure Efficiency and Governmental Projects Authority from 2019 to date.
- Co-founder of the Saudi Bioacids Company since 2012G until now.
- Executive Vice President of Selask Company, a listed joint stock company, from 2015G to 2017.
- CEO of Mudhaf Group for Communications and Energy Services from 2011 to 2015.
- CEO of Abdullah Saeed Al Sayed Partners Contracting Company from 2003 to 2011.
- Chairman of the Board of Directors of the Textile Company (a listed joint stock company) from 2021G until now.
- Board member of the Board of Directors of Dar Al Makabah Company (a listed joint stock company) from 2021G until now.
- Board member of the Board of Directors of the Textile Company (a listed joint stock company) from 2017G until 2021G.

# ALITCO Solutions & Products







# INDUSTRIAL DIVISION

# Business Sectors

## Industrial Division

In 1978 ALITCO began entering the industrial sector by assembling and supplying hollow metal doors and frames, and the activity expanded to include wooden doors and frames, woodwork, bathroom partitions and door accessories with American and European specifications.

The production facilities are located in the third industrial area in Riyadh, on an area of 10,500 square meter for metal doors, and 4,000 square meters for auto equipment and wooden doors & woodwork, which contains manufacturing automation systems and robots.

### Factories



Metal  
Doors Frames



Wooden  
Doors &  
Frames



Wood  
Works



Door  
Hardware and  
Access control



## Solutions & Products

### Hollow Metal Doors

**Steel doors factory in ALITCO Aldrees is producing doors that comply to the following standards:**

- HMMA
- NFPA80,101
- ITSUL10C,10B
- UL10C,10b

**With fire rating up to 3 hours**

**Serves multiple sectors like:**

- Governmental Buildings
- Hospitals
- Schools
- Institutes & Universities
- Special Buildings
- Security Buildings

### Wooden Doors

**Wooden doors factory in ALITCO Aldrees is producing doors that comply to the following standards:**

- AWI
- WDMA
- ITS UL 10C, 10B

**With fire rating up to 90 Minutes**

**Serves multiple sectors like:**

- Governmental Buildings
- Hospitals
- Schools
- Institutes & Universities
- Special Buildings
- Security Buildings

### Hardware

## Mechanical Doors Hardware

The industrial sector In ALITCO Aldrees supplies mechanical accessories for doors with American specifications that serve governmental sectors according to the approved specifications for each project separately from different brands such as: Stanley, Dorma, Ellegion and others.

The industrial sector also supplies European accessories which serve the governmental and residential sectors according to the specifications approved for each project separately from brands like " Briton, Dorma and others.



## Access Control Hardware

**The industrial sector in ALITCO Aldrees supplies door accessories and access control with American and European specifications for both governmental and private projects Like:**

- Governmental buildings
- Hospitals
- Hotels
- Schools
- Institutes and Universities

## Wooden Works

**Woodwork (design, manufacture and supply of all woodwork, interior and exterior decoration) Like:**

- Hotels
- Private Villas
- Residential complexes
- Offices

## Toilet Partitions

**Toilet partitions factory in ALITCO Aldrees produces the best types of toilet partitions with American and European specifications that serve:**

- Governmental buildings
- Commercial buildings
- Schools
- Institutes and Universities
- Hospitals

## Control panels

**ALITCO Aldrees provides consultancy, design, supply, installation, testing and after sales services for “Control Panel”, where in-house assembly takes place at our facilities, resulting in a reduced cost.**

Technical Data:

- Enclosure: Eldon Enclosure IP66.
- Materials: ABB Materials for Main Components
- PLC Based: Control Systems Designed Based PLC From Siemens.
- Also Designed as Classic Control System as Customer Request.
- Included BMS Contact: Dry Run Contact for BMS, Pumps (Run, Stop, Trip) and all Tanks Levels.





# **ELECTROMECHANICAL SECTOR**

# Business Sectors

## Electromechanical Division

In 1964, ALITCO started with importing, selling, and maintaining tools and equipment, the activities developed to provide solutions and consultancy for several products under the classification of electromechanical solutions in the sectors of energy, water pumps and vehicle solutions.

## Solutions & Products

Consultancy, design, supply, installation, testing and after sales services for the following solutions:



### Energy Solutions



Automations Solutions



Fuel Solutions



Gas "LPG" Solutions



Renewable Energy



### Water Pumping Solutions



Water Pumps



Fire Pump Systems



### Vehicles Solutions



Vehicles Work Shop



Vehicles Auto Washing Solutions



EV Car Chargers



Lubrications Systems





# Energy Solutions



## Energy Solutions

01.

Automation  
Solutions

02.

Fuel  
Solutions

03.

Gas  
Solutions

## Department Structure

### Product Head

- Sales Engineers
- Estimation  
Department
- Insulations &  
Technical Support



# Energy Solution

Consultancy, design, supply, installation, testing and after sales services for fuel solutions, including transportation and construction of fuel stations, as well as fuel automation systems.

## Fuel & Automation Solutions

- Fuel transfer solution, design, installation & testing of gas stations.
- Fuel transfer system for generator, boiler, firefighting pumps.
- Fuel automation systems.
- Fuel transfer system for Marine Aviation.

## Gas “LPG” Solutions

- Liquefied Petroleum Gas
- Natural Gas ( DRY )
- Medical GAS
- Compressed Air System
- For domestic, commercial and industrial activities
- Control panels

## Renewable Energy Solutions

- Hydrogen ( H<sub>2</sub> )
- Solar energy
- Control panels





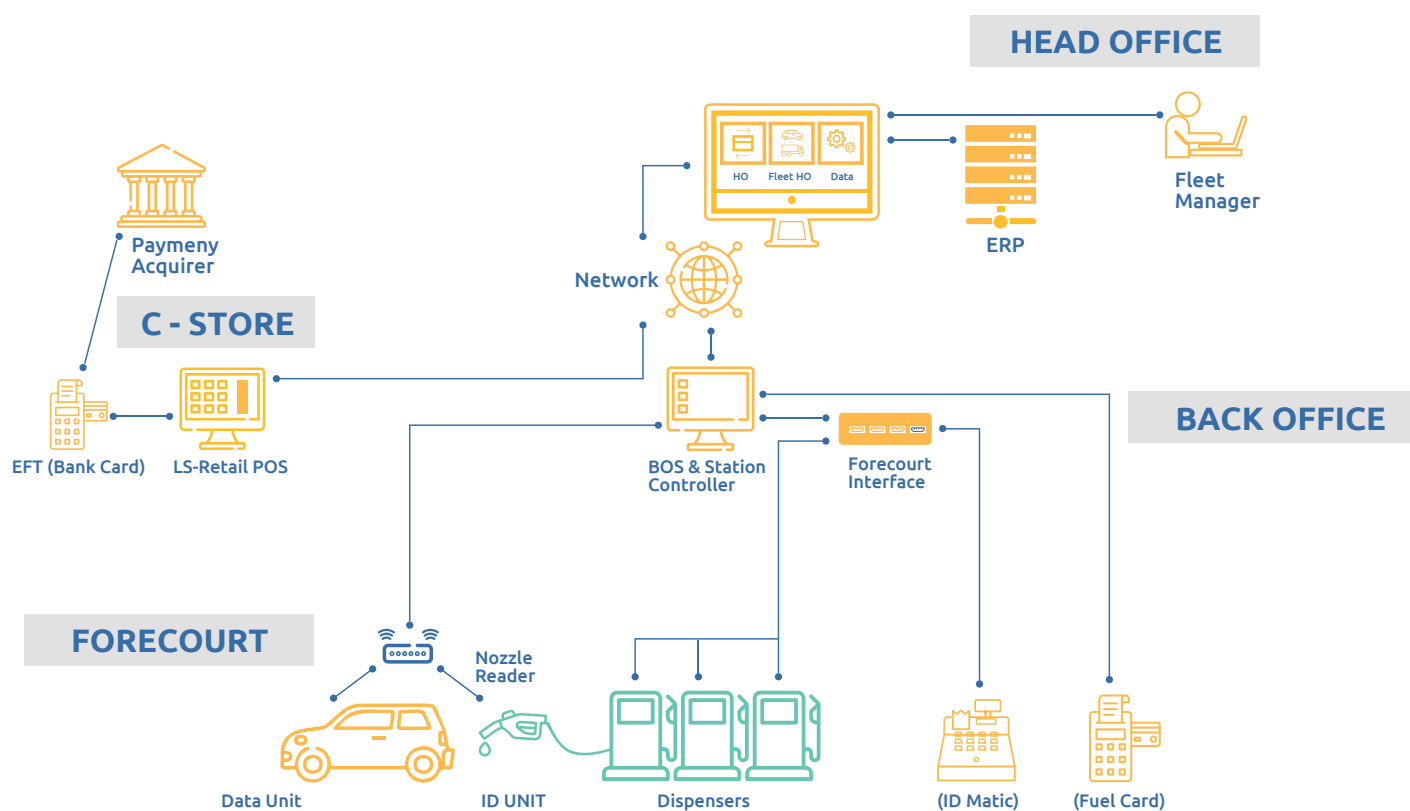
# Automation Solutions

## Brief:

ALITCO Aldrees provides consultancy, design, supply, installation, testing and after sales services for fuel automation system solutions.

## Target Market:

- Fuel Stations
- Commercial
- Industrial
- Factories
- Farms
- Transportation Companies
- Logistic Companies
- Dock Yards
- Railways Sectors





# Fuel Solutions

## Brief:

ALITCO Aldrees provides consultancy, design, supply, installation, testing and after sales services for fuel solutions including transportation and construction of fuel stations as well as fuel automation system.

## Target Market:



**General  
Construction  
Projects**



**Farms  
"Green Farms  
& Animal Farms"**



**Fuel  
Solutions  
For Generators**



**Fuel  
Stations**



**Factories**





# Gas Solutions

## Brief:

ALITCO Aldrees offers consultancy, design, supply, installation, testing and after sales services for gas solutions.

## Target Market:



### Residential Uses

Buildings, villas, commercial, residential complexes and central kitchens



### Commercial Uses

Restaurants, commercial markets, hospitals, central kitchens and F&B



### Industrial Uses

Plants, factories, big boilers, fire Furness and heaters







# **WATER PUMPING SOLUTIONS**



## Water Pumping Solutions

01.

Water  
Pumps

02.

fire Pump  
Systems

## Department Structure

### Product Head

- Sales Engineers
- Estimation  
Department
- Insulations &  
Technical Support

# Water Pumping Solutions

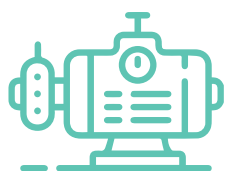
ALITCO Aldrees Offers Consultancy, design, supply, installation, testing and after sales services for water pump solutions for residential and commercial uses, fire and sewage systems

## Water Pumping Solutions

- Residential pumps.
- Booster transfer pump sets.
- Drainage sewage pumps.
- Dewatering pumps.
- Chilled water pumps.
- Deep well pumps.
- Firefighting systems.
- Water heating solutions.
- Control panels.







# Water Pumps Solutions

## Brief:

ALITCO Aldrees offers consultancy, design, supply, installation, testing and after sales services for water pump solutions for "residential and commercial uses, fire and sewage systems".

## Target Market:



### Commercial Uses

Restaurants, commercial markets, hospitals, central kitchens and F&B



### Residential Uses

Buildings, villas, commercial and residential complexes and central kitchens



### Agriculture Uses

Farms "Green Or Animal Farms"



### Industrial Uses

Industrial Factories





# Fire Pump Systems

## Brief:

ALITCO Aldrees offers consultancy, design, supply, installation, testing and after sales services for water pump solutions for “residential and commercial uses, fire and sewage systems”





# VEHICLES SOLUTIONS



# Vehicles Solutions

01.

Vehicles  
Workshops

02.

Vehicles  
Auto  
Washing  
System

03.

EV  
Chargers

04.

Lubrications  
Systems

## Department Structure

### Product Head

— Sales Engineers

— Estimation  
Department

— Insulations &  
Technical Support



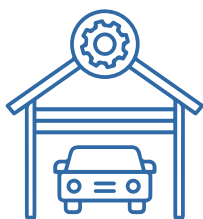
## Vehicles Solutions

ALITCO Aldrees Offers Consultancy, design, supply, installation, testing and after sales services for vehicle workshop processing solutions, lubrication equipment and electric vehicle charging systems, from AC/DC types as well as automatic washing systems.

### Vehicles Solutions

- Automotive, garage equipment and lubrication solutions.
- Electric vehicle charging solutions (AC/DC) types.
- Automatic vehicle washing systems (cars, trucks, buses, trains...etc.)





# Vehicles Workshops Solutions

## Brief:

ALITCO Aldrees Offers consultancy, design, supply, installation, testing and after sales services for vehicle workshop fit out solutions.

## Target Market:



### Large Companies & Governmental Sectors

Transportation companies  
Car rental companies  
Car agencies  
Governmental Sectors



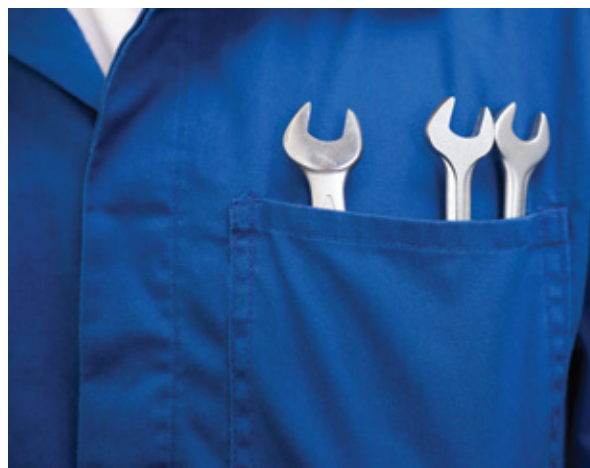
### Industrial Uses

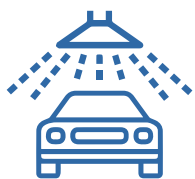
Factories Industrial  
workshops



### Vehicles Maintenance and Services Centers

Cars, trucks & buss workshops





# Vehicles Auto Washing System Solutions

## Brief:

ALITCO Aldrees offers consultancy, design, supply, installation, testing and after sales services for automatic car wash equipment solutions.

## Target Market:



**Car Washing  
Centers**



**Fuel  
Stations**



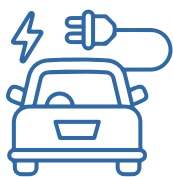
**Transportation  
Service  
Companies**



**Transportations  
companies**







# EV Charging Solutions

## Brief:

ALITCO Aldrees offers consultancy, design, supply, installation, testing and after sales services for electric vehicle charging system solutions.

## Target Market:



### Residential Uses

Houses, Villas and Compounds



### General Uses

General Car Parkings, Commercial Centers, Airports and Hospitals





# Lubrications Systems

## Brief:

Lubrication System to increase production and reduce waste and down time.

- Equipment to monitor, control, manage and dispense fluid.
- Full range of high-quality pumps
- Metering valves
- Hose reels
- Waste Oil Suction drain
- Oil drain Pit
- Lube Automation





# CREDENTIALS

# ALITCO Brands

## Industrial Division



Door's Hardware (EN)



Steel Doors



Wooden Doors



Door's Hardware (EN)



Steel Doors

## Electromechanical Division



Oscar



Orca

## Some Of Our Partners

Over the past years, ALITCO Aldrees has been eager to build multiple partnerships with major local and international companies, which have been carefully selected to meet the highest quality standards and represent a real addition to the excellence and prestigious reputation that the company enjoys, as some partnerships extend for more than 40 years.



## Some Of Our Customers







# PROJECTS

We are proud

We are proud to have made contributions to the most important Saudi projects



نيوم NEOM



البرنامج السعودي  
لتنمية وإعمار اليمن

The Saudi Development and  
Reconstruction Program for Yemen



## Some Of Our Projects



### Neom

Supply, testing and commissioning  
4 mobile fuel stations at Neom.



### Amaala

Supply, testing and commissioning of  
3 mobile fuel stations at Amaala.



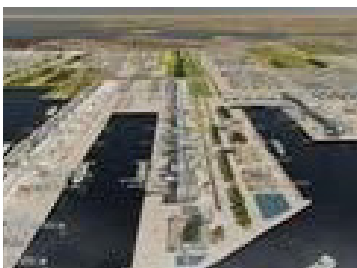
### Shuqaiq Steam power Plant

We installed a fuel station in "Shuqaiq"  
steam power plant with Hyundai as a contractor.



### Ministry of Environment, water agriculture project

Supply, testing and commissioning of  
3 mobile fuel stations at Amaala.



### Ras Alkhair Industrial Port

Fuel station for supplying ships with fuel.  
End user: Port Authority Main contractor:  
China Harbour Engineering Ltd. Date 2011



### Saudi Dolomite Factory

Supply, testing and commissioning of  
3 mobile fuel stations at Amaala.

## Some Of Our Projects



### Yemen –Socotra Island

Project: Supply and Installation of fuel tanks and fuel pumps including civil works.



### Bahrain Formula



### Algeria Petroleum Refinery

Project: Hollow metal door frames, wooden doors and door hardware.



### Hyundai Kuwait power Plant



وزارة البيئة والمياه والزراعة  
Ministry of Environment, Water & Agriculture  
المملكة العربية السعودية

### Ministry of Environment water & Agriculture

Project: Wayne pump, fiber glass tanks, red jacket, Nupi with fitting , transfer pump, fuel system sub. contract PC Marine service.

## Some Of Our Projects



### **Saudi Aramco**

In the most dangerous desert “Empty Quarter desert” we have accomplished a gas station for Saudi Aramco at Shayba Gas Plant  
Contractor: SinoHydro Corporation Limited



### **Maaden**

Contractor: Jacobs  
Project: Gas Station for Maaden  
Wajad Al Shamal Location: Turaif



### **Port Logistic Facility**

EndUser: SABIC  
Location: Jubail Commercial Port



### **King Abdullah Project for the Development of Security Centers KAP 4**

Project Hollow Metal Doors Frames and Door Hardware Stanley.



### **King Abdullah Project for the Development of Security Centers KAP 2**

Project Hollow Metal Doors Frames and Door Hardware Stanley.

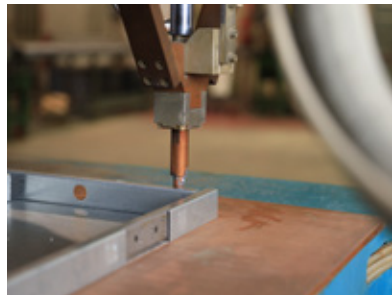
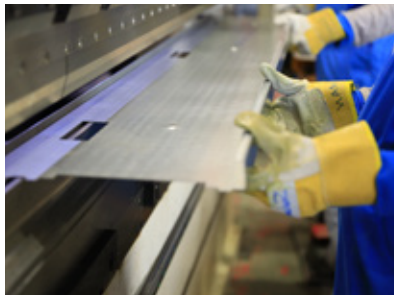


### **The Saudi Arabian National Guard Health Affairs (SANG)**

Supply, testing and commissioning of 3 mobile fuel stations at Amaala



# Factories





# Gas Stations



## Bee Group Station

Orca dispensers



## Okten Station

Project: Hollow Metal Doors, Frames, Wooden Doors and Door Hardware



## Noor Stations

Orca dispensers



## Al Tayser Station

Orca dispenser 2Hose LS, redjacket and nupi



## GoStation

Encore dispensers Damam



## KPS Station

Frontier dispensers Jubail



## Orange station

Wayne dispensers

شركة الدريس للصناعة والتجارة (اليتكو)  
AlDrees Company for Industry & Trade (ALETCO)

+966 112 500 600

KSA - Riyadh, P.O Box 2049 – 113211

info@alitcogroup.com

www.alitcogroup.com